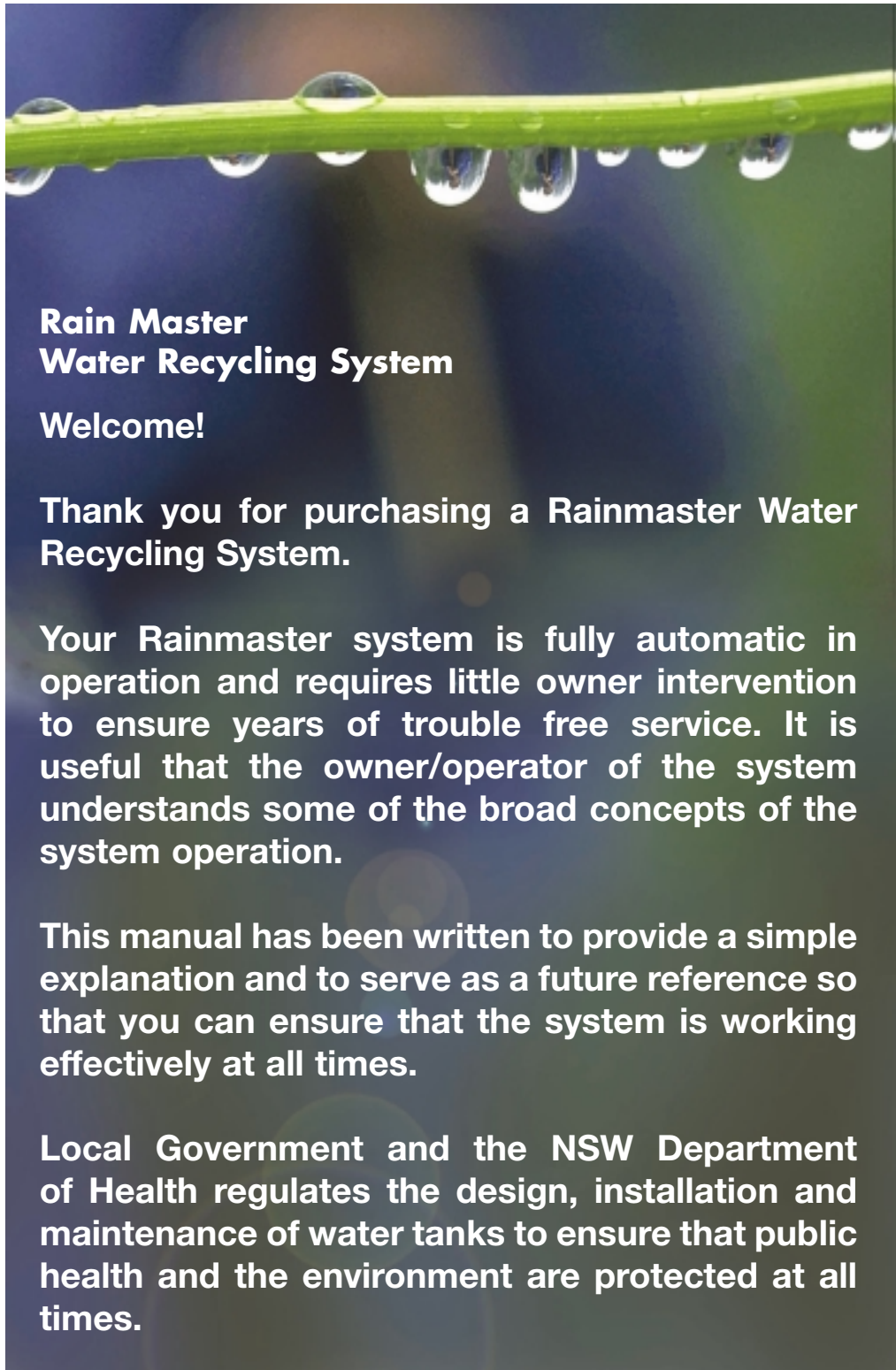
The background of the page is a photograph of a modern, two-story house with a light-colored facade and white columns. In the foreground, there is a landscaped garden with a stone retaining wall, a small pond, and various plants and mulch.

Owners Manual For The Rainmaster Water Recycling System



**Rain Master
Water Recycling System**

Welcome!

Thank you for purchasing a Rainmaster Water Recycling System.

Your Rainmaster system is fully automatic in operation and requires little owner intervention to ensure years of trouble free service. It is useful that the owner/operator of the system understands some of the broad concepts of the system operation.

This manual has been written to provide a simple explanation and to serve as a future reference so that you can ensure that the system is working effectively at all times.

Local Government and the NSW Department of Health regulates the design, installation and maintenance of water tanks to ensure that public health and the environment are protected at all times.

The Water Cycle

The water cycle is the term used to describe the naturally occurring processes of rainfall, evaporation, absorption, storage and use of water in the environment. The cycle starts with cloud formation and when rain falls, it is collected on the ground and runs into existing bodies of water such as streams, lakes and rivers. Some of this water finds its way back into the environment through evaporation back into the atmosphere and some finds its way into the soil through percolation for use by plants and trees.

The system is dynamic and constantly changing. Weather conditions such as humidity and temperature affect the amount of water drawn back into the air by evaporation or transpiration. The amount of rainfall (or lack of it) affects percolation of water into the soil in the proceeding days and months.

Human use of water affects the water cycle in a variety of ways. Specifically water is drawn from its normal course of function within the water cycle and applied to domestic, agricultural and industrial uses. This diverted water, once used must be returned to the water cycle somewhere further down stream. The quality of water within a catchment has a significant impact on environmental and public health.

Rainwater Tanks

Rainwater tanks are considered an option in urban areas where providing water for our increasing population is becoming an important issue. Rainwater tanks can provide water for household use, both inside and outside, making a significant contribution to total water supplies. Many people regard rainwater as a healthy alternative to chlorinated mains water.

Tanks offer several advantages:

- they reduce demand on water storage
- rainwater is free of chlorine
- rainwater is soft water
- they provide an emergency supply should there be a problem with the mains water supply
- they reduce stormwater runoff.

How your system works:

Your Rainmaster water recycling system has been designed to collect roof water in the tank and recycle the water through a pump and control unit into the dwelling.

When an occupant of the home flushes a toilet or uses the washing machine the control unit automatically turns the pump on to supply water to the required fittings. As soon as the fittings are at the level of water required the control unit will turn the pump off automatically.

If you run out of rainwater the low level float switch in the tank automatically adds town water to the tank. This guarantees that the homeowner will not run out of water during periods of low rainfall.

The recycled water is generally connected to the toilets, washing machine and outside taps. (conditions will vary depending on the local council)

Rainwater Quality

Water quality is generally good if the tank is well-installed and maintained - gutters, roofs and downpipes also need maintenance. If the tank water is not clear, has a taste or an odour, steps should be taken to find the cause and fix the problem. If it is to be used for drinking, more care will be needed to ensure its high quality than if it is to be used for laundry or garden purposes.



Maintaining your Investment

The Tank:

Proper maintenance of the tank, roof and gutters is essential to ensure safe supply of water.

Your roof and gutters should be inspected and cleared of leaves and other debris every three to four months (this should be increased if there are tall trees around the property).

Tanks should be inspected every 2-3 years. If sludge is present in the tank it should be removed by completely emptying the tank (de-sludging).

The manhole on the tank should be sealed after servicing. Professional tank cleaners are available in all areas.

Plastic tanks will need some water or should be tied down to stop them from blowing over in strong winds when they are emptied.

Leaf Diverters:

Some builders install leaf diverters on the down pipes. This will allow leaves to fall on the ground rather than enter the rainwater system.





First Flush Devices:

First flush devices prevent the first portion of roof run off from entering the tank and will reduce the amount of dust, bird droppings, leaves etc, that can accumulate on roofs from being washed into tanks.

The device operates by filtering the first portion of roof water in a chamber that collects leaves and other contaminants. As this chamber fills up the clean roof water continues to flow into the tank.

After the rainfall the water slowly trickles out of the chamber through a small hole at the bottom. Most first flush devices have access for cleaning the leaves and other debris. This should be done every three months.

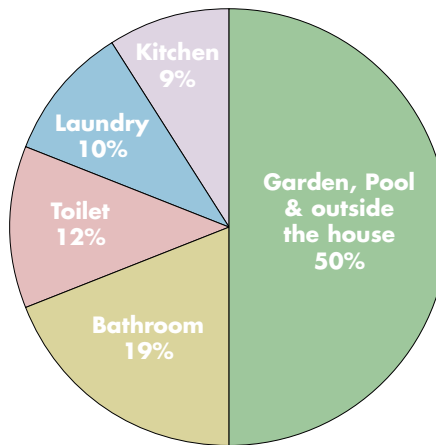
Unscrew cap to remove any debris every 3 months

Water At Work

How much water do we use?

During the 2000-2001 financial year, 93 of the largest water utilities across Australia (which between them service 83% of the population) produced on average, 460 litres of drinking water per person per day. They supplied 259 litres of water per person per day to households. Of this only 2 litres per person were actually drunk. The other 201 litres per person were used by industry, in commercial premises, for institutional uses, or were unaccounted for (i.e. stolen or leaked).

A graph showing how much water we use in the different parts of our home.



Domestic Use

Domestic water consumption varies widely ranging from 350 litres per person per day to 1,500 litres per person per day. The average is about 635 litres which is enough to fill about 70 buckets. (A standard bucket will hold 9 litres - about 2 gallons).





Quick Tips

Every day, there are many simple little things we can do around the house to save water money and help the environment

- Checking for leaks in taps, pipes and dishwasher hoses is an easy way to reduce on water wastage. Remember, one leaking tap can waste up to 2,000 litres of water a month.
- Put the plug in the sink when washing your hands instead of holding them under running water.
- Thaw frozen foods before you need them or use the microwave instead of placing them under running water.
- Prevent taps from leaking by turning them off lightly and replace washers as soon as they begin to leak
- Washing fruit and vegies in a half-filled sink instead of under running water is a great way to cut back on water wastage.
- Rinsing your dishes in a plugged sink rather than under a running tap saves water and is just as easy and effective.
- Installing one of the latest AAA Rated Shower heads can give you a great shower and save you around 10 litres of water a minute. They also save you energy costs as you'll use less hot water.
- To rinse your razor, run a little hot water into a plugged sink. Rinsing your razor under a running tap wastes lots of water.
- There's no need to leave the tap running while you brush your teeth. Simply wet your toothbrush before you begin and use a glass of water to rinse your mouth.

Troubleshooting

FAULT OBSERVED	POSSIBLE CAUSE	REMEDIAL ACTION
<ul style="list-style-type: none"> No water to flush the toilet 	<ul style="list-style-type: none"> Pump Failure Power failure Water turned off to control unit 	<ul style="list-style-type: none"> Call Rainmaster Check Power Supply Turn Water on
<ul style="list-style-type: none"> No water to Washing Machine 	<ul style="list-style-type: none"> Pump Failure Power failure Water turned off to control unit 	<ul style="list-style-type: none"> Call Rainmaster Check Power Supply Turn Water on
<ul style="list-style-type: none"> No water to Outside Taps 	<ul style="list-style-type: none"> Pump Failure Power failure Water turned off to control unit 	<ul style="list-style-type: none"> Call Rainmaster Check Power Supply Turn Water on
<ul style="list-style-type: none"> The Water from the tank is dirty 	<ul style="list-style-type: none"> First flush device is dirty Yard drains connected to the tank Tank needs desludging Leaves in gutters 	<ul style="list-style-type: none"> Clean first flush device Disconnect offending connections Call Tank Maintenance Clean Gutters or call Rainmaster

This should be used as a guide only

Call Rainmaster on the phone number below
if you have any queries

Customer Service 1 800 733 020



AN OVERVIEW OF THE RAINMASTER CENTRAL CONTROL

The RainMaster Central Control is a powerful tool that allows you to manage your irrigation system from a central location.

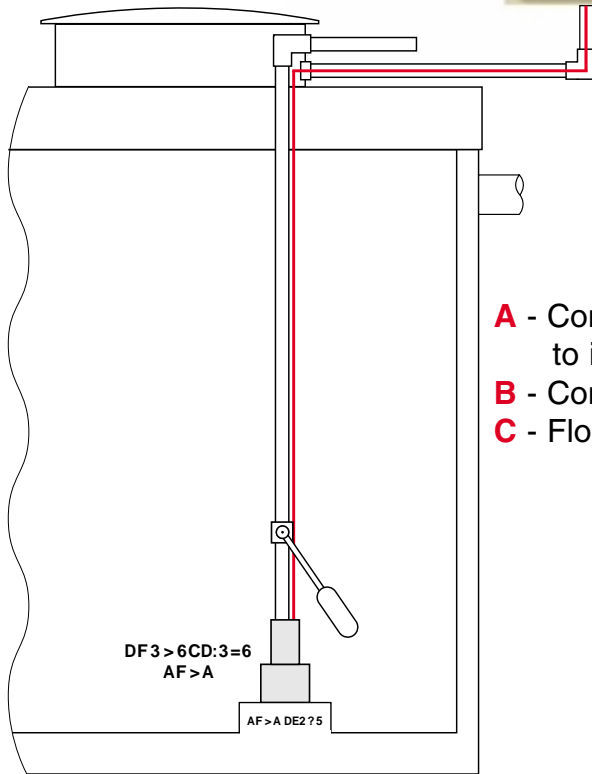
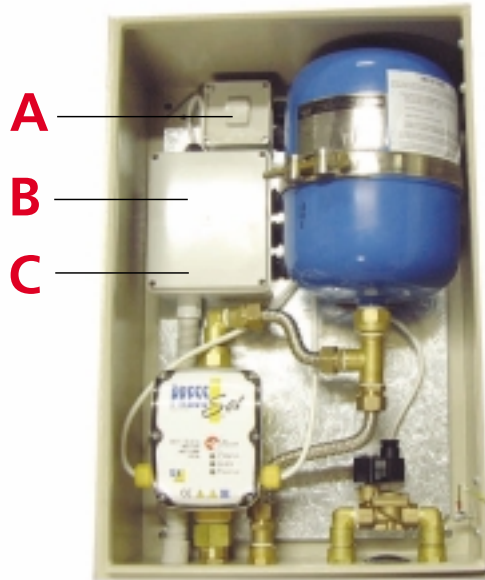
The RainMaster Central Control is a powerful tool that allows you to manage your irrigation system from a central location. It is designed to be easy to use and provides a range of features to help you control your system effectively.

The RainMaster Central Control is a powerful tool that allows you to manage your irrigation system from a central location. It is designed to be easy to use and provides a range of features to help you control your system effectively.

For more information, please contact our sales team on 08 988 99779 or visit our website at www.rainmaster.com.au. We are happy to help you with any questions you may have.

&
&
&

RAINMASTER ELECTRICAL WIRING DIAGRAM



- A** - Connect Mains Power to isolating switch
- B** - Connection of Pump Wiring
- C** - Float Switch Connection

All electrical works to comply with the relevant Australian Standards

Rainmaster Control Unit Plumbing Connection



Electrical

Water Tank-In

To House Plumbing

Water Tank-TOP UP

Mains Water In

Spec. table of Pump on next page

Specification of Control Unit and Pump

Control Unit

System Pressure	1.5-7.5 bar
Power Supply	230 vac - 50/60 Hz
Enclosure Class	IP 42
Weight	24 kg
Air Tank	8 litre
Press Control	Watertech
Top-up	1 inch
Dimensions:	
Width	400 mm
Height	600 mm
Mains Water connection	3/4 inch
Suction line connection	3/4 inch
House connection	3/4 inch

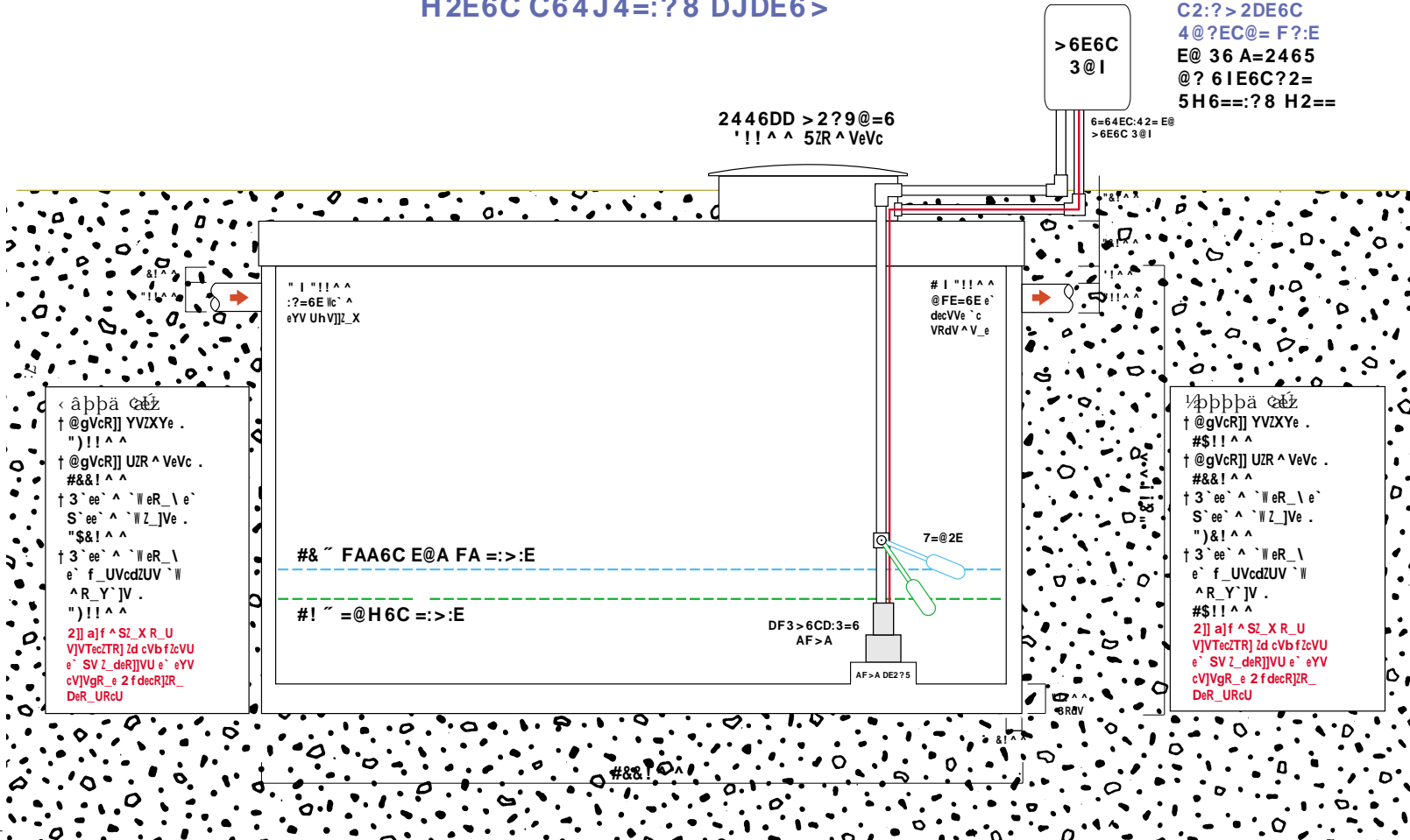


Submersible Pump

Make	Tesla Diver 100M
Flow	80 - 85 l/m
Head	10 - 48 m

C2:?>2DE6C C6:?7@C465 4@?4C6E6
H2E6C C64J4=?:8 DJDE6>

C2:?>2DE6C
4@?EC@= F?:E
E@ 36 A=2465
@? 6IE6C?2=
5H6==?:8 H2==



ABOVE GROUND TANKS

5600 Litres

- Diameter 1900 mm
- Wall Height 2050 mm
- Total Height 2400 mm
- Outlet 38 mm
- Overflow 90 mm
- Inlet 90 mm
- Filter bag 350 mm



10000 Litres

- Diameter 3100 mm
- Wall Height 1300 mm
- Total Height 1640 mm
- Outlet 38 mm
- Overflow 90 mm
- Inlet 90 mm
- Filter bag 350 mm

